

## Quick Installation Guide

# SMART zero

### Wired Connection Setup Guide

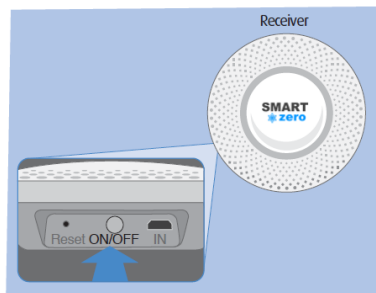
Thank you for purchasing SMARTzero. Before using SMARTzero for the first time, please read this simple guide to help you get setup.

### Package contents

- Receiver
- USB cable & plug
- Receiver mounting template and fixing screws
- Network cable
- Temperature & Humidity sensor(s)
- Quick installation guide

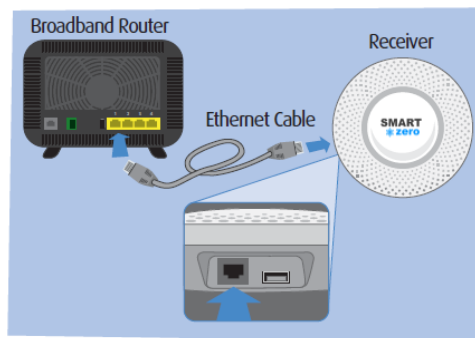
### Step 3

Push down the **power button** on the **Receiver**.



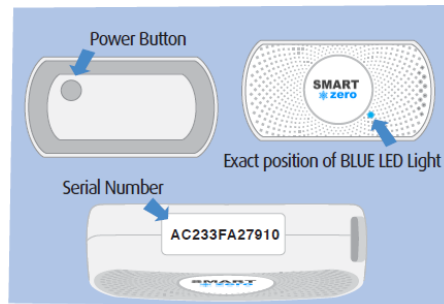
### Step 1

Connect the supplied **Network cable** from your broadband router to the network port on the **Receiver**.



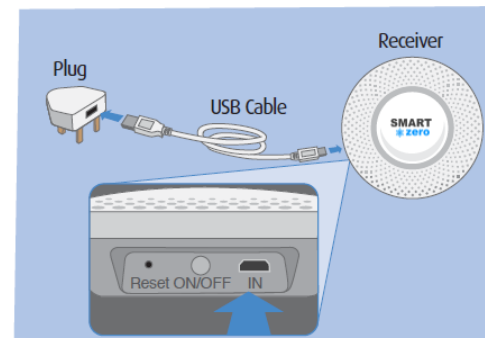
### Step 4

For each **Temperature & Humidity sensor**, press & hold the power button until a solid blue LED light is displayed. Make a note of the **serial number** against the appliance name to be monitored and place the **Temperature & Humidity sensor** into your appliance.



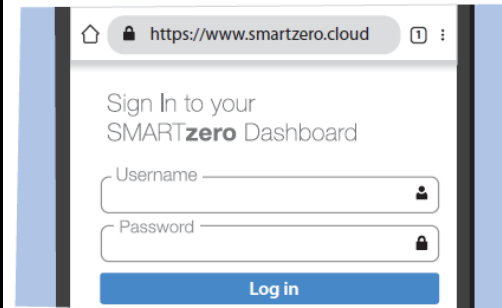
### Step 2

Connect the **Receiver** to a power outlet using the **USB cable & plug**.



### Step 5

The wired installation is now complete and now all that remains is to configure your SMARTzero portal by logging into [www.smartzero.cloud](https://www.smartzero.cloud)



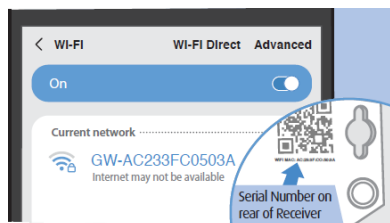
# Quick Installation Guide

## Wireless Connection Setup Guide

For Wireless setup, please follow **Step 2** and **Step 3** on the reverse side and then continue with **Step 4** below.

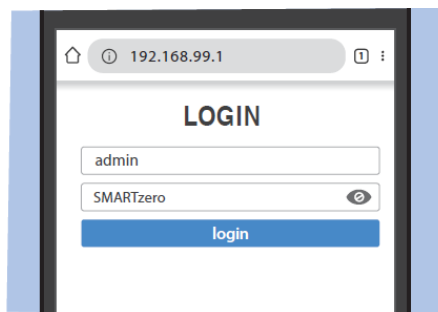
### Step 4

On a smart device, display all available Wi-Fi networks and connect to the **Receiver**. The serial number can be found on the rear of the **Receiver**.



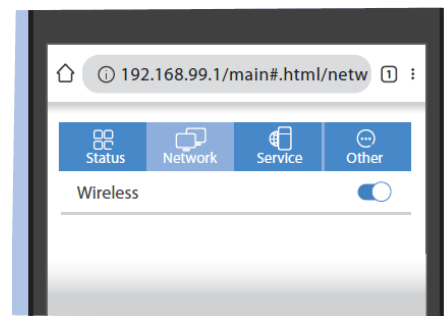
### Step 5

Open a web browser on the smart device and enter **192.168.99.1** into the address bar. To login, enter the default username: **admin** and password: **SMARTzero**.



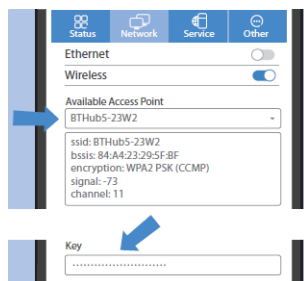
### Step 6

Navigate to the **“Network”** tab and enable the **“Wireless”** switch.



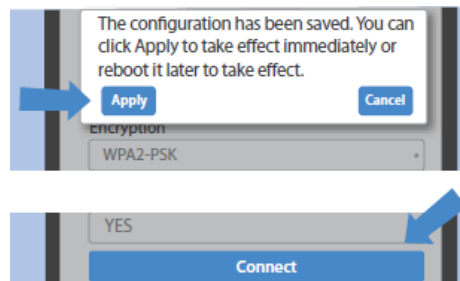
### Step 7

Select your Wi-Fi network from the **“Available Access Point”** drop down. Then enter the password of your Wi-Fi network into the **“Key”** field.



### Step 8

To apply the changes, click **“Connect”** and **“Apply”** in the pop out window to reboot the **Receiver**.



### Step 9

The wireless installation is now complete. Please **follow Step 4** on the reverse side on how to place **Temperature & Humidity sensor(s)** into your appliance(s). Once complete, configure your SMARTzero portal by visiting [www.smartzero.cloud](http://www.smartzero.cloud)

